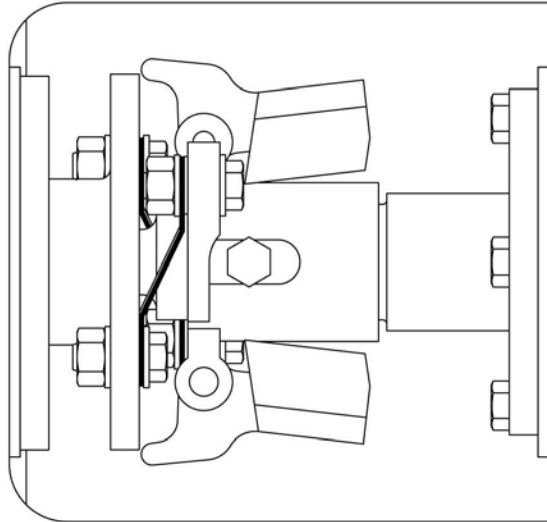


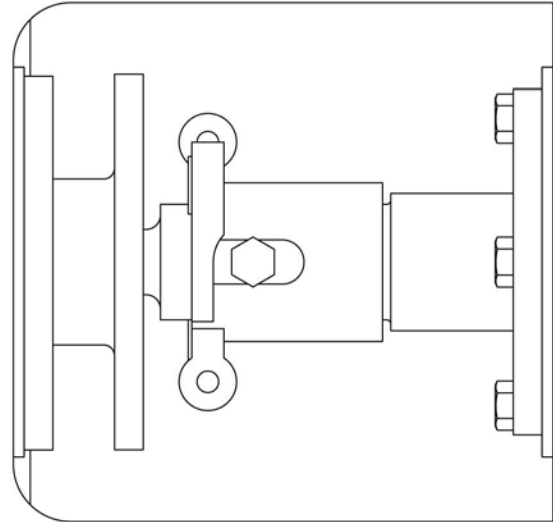
AF Shaft Lockout for SolidLock® Static Seal

The Wilfley SolidLock® static seal requires a locked out shaft. If you have the Wilfley Hydrovoir® static seal installed your pump shaft will already be locked and you can skip this step.

1. Remove the governor weights (28), governor springs (25), and all of the associated hardware.



Before



After

2. Assemble the pump with the new SolidLock® static seal per the supplemental assembly manual. Ensure that the set screws (S2P) are loose and that the rotary seal subassembly can move axially along the shaft sleeve.
3. Push the impeller (8) towards the power end frame until it makes contact with the lab ring (S1A). This can be done with or without the case (3) attached.
4. Measure the distance between the holes in the governor sleeve (24) and the thrust drive sleeve (38). Calculate the quantity of washers (98M) that are required to fill the gap and then add two additional washers. This will properly set the impeller / expeller clearances. For example:

Distance Between Sleeves	Washer Thickness	Washers Required	Total washers
0.5" (13mm)	0.05" (1.3mm)	10 (+2 additional)	12

5. Install washers (98M) and hardware and tighten to lockout the shaft (13). The SolidLock® static seal can now be adjusted per the assembly manual. Verify free rotation prior to startup.

